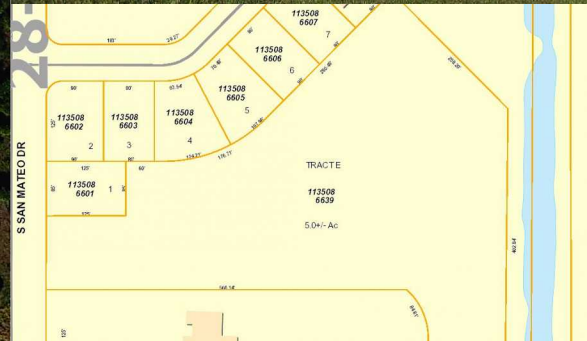




# Real Estate Services

## 5 +/- ACRES

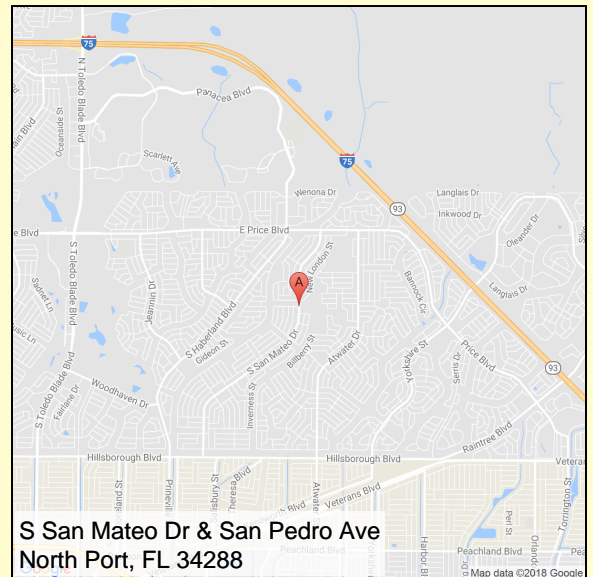


5+/- acres fronting San Mateo Ave in North Port FL. Land Use will allow up to 3.5 units per acre. BANK OWNED - PRICED TO SELL! SUBMIT YOUR OFFER NOW!

- Asking: \$44,900
- Zoned: RSF-2, Residential
- Fut. Use: LU-F-LOW
- Subdiv: 16th Add Pt  
Charlotte
- Parcel ID: 1135-08-6639

**TIMOTHY R. KISTEL**  
TRK Real Estate Services  
12244 Treeline Ave., Suite 6  
Fort Myers, FL 33913

Office: 239-274-3303  
Cell: 239-980-8354  
Email: [tim@kistel.net](mailto:tim@kistel.net)



This publication is not an offer to sell by owner and no contract for sale is intended or will be made until an offer is submitted by the prospective purchaser and is accepted by the owner in writing. The information contained herein has been obtained from sources deemed to be reliable, however, no representation or warranties are made with respect to the accuracy of the information. Prospective purchasers are advised to conduct their own investigation as to the use and suitability of this property.